

Don't follow your dog if
they walk away



Instead, give your dog space
and wait for them to approach
you to play



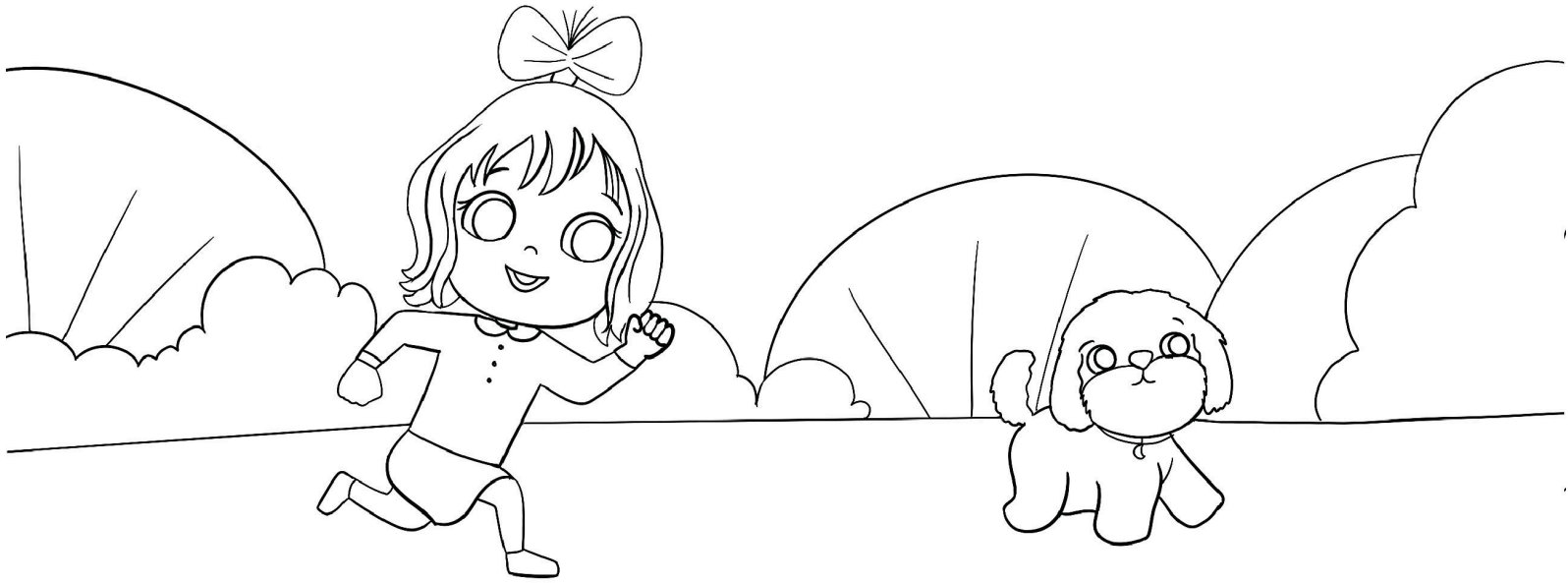
Don't pull a toy from
a dog's mouth



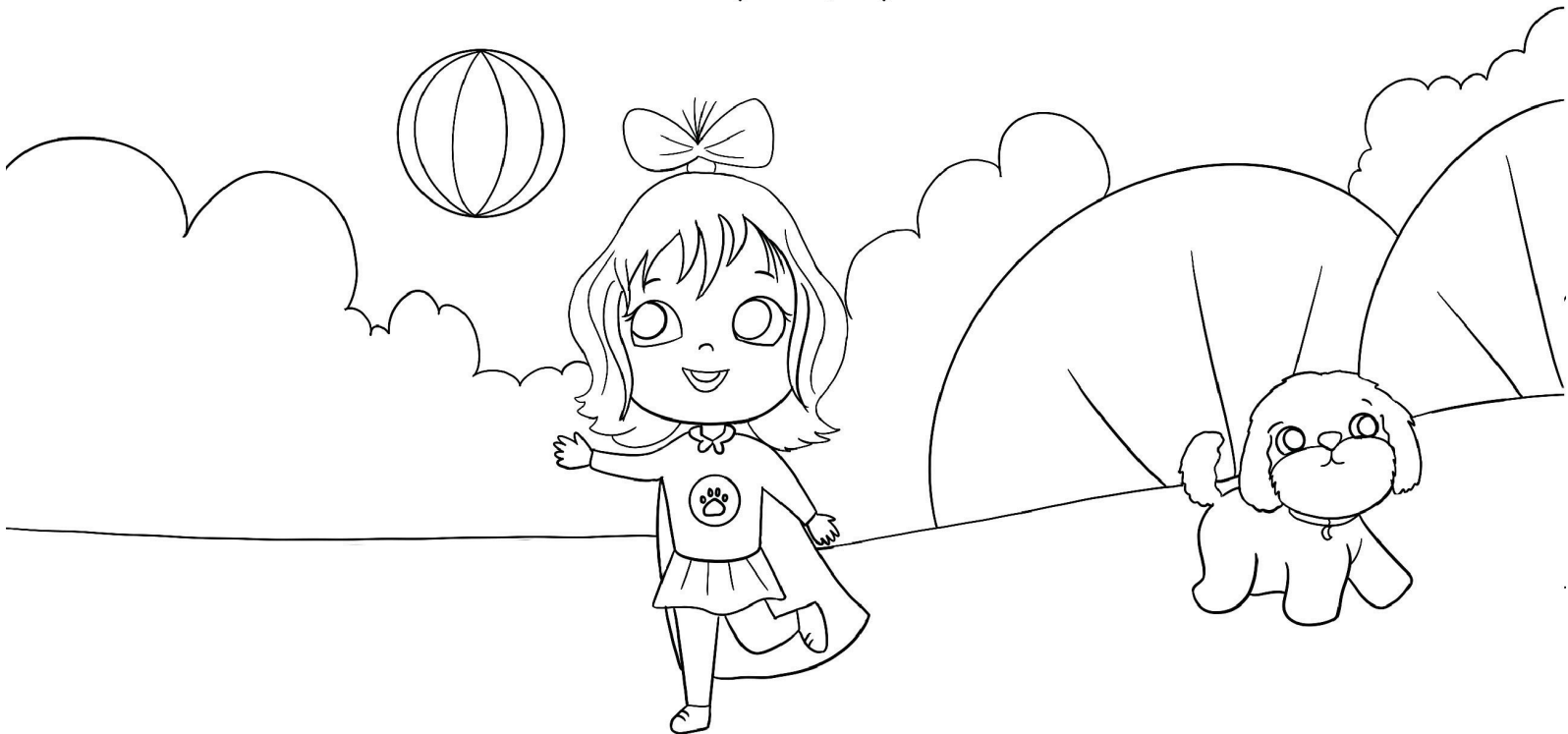
Instead wait for them to drop it
down, and throw the ball for
them right away.



Don't chase your dog



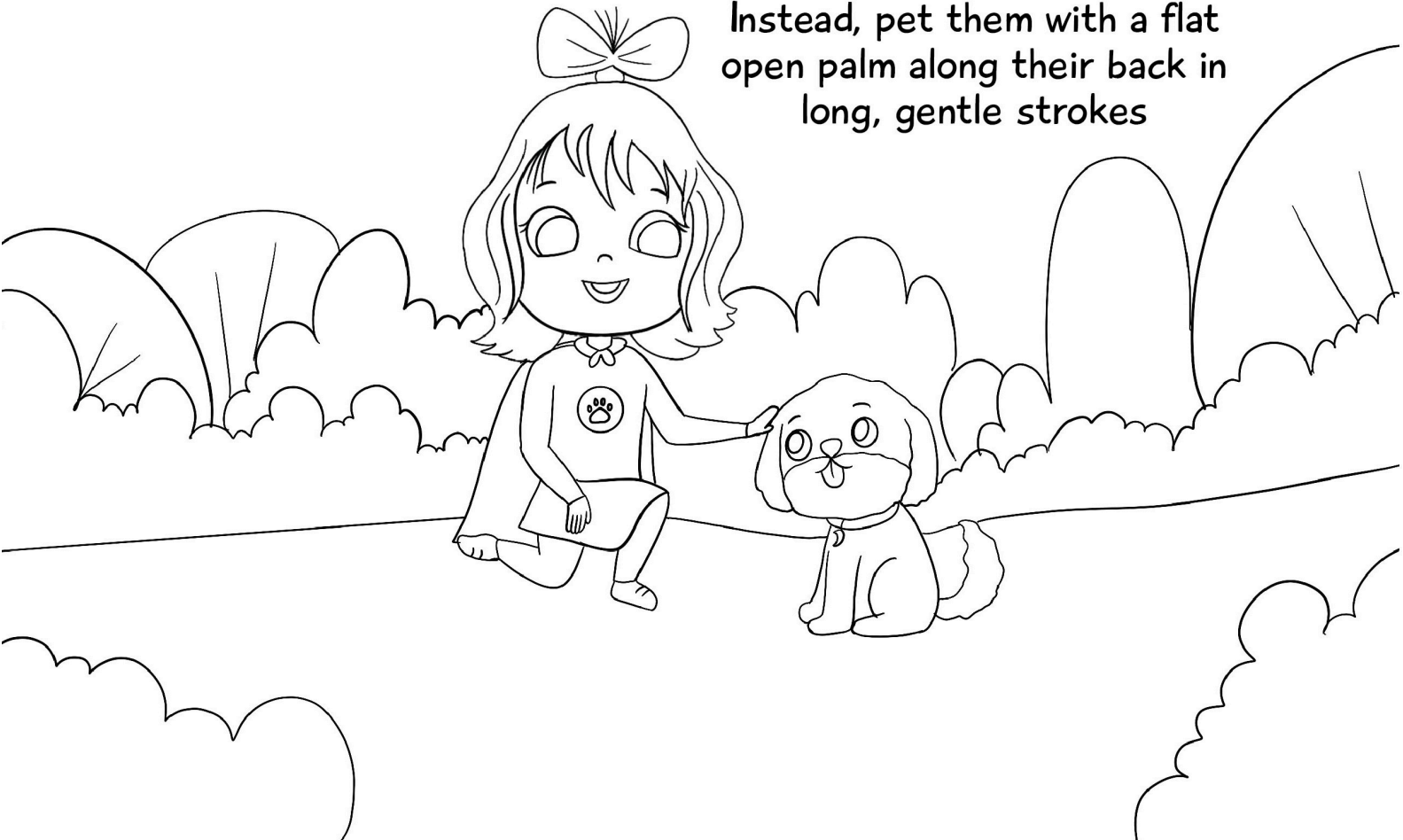
Instead, wait for them to
approach you which shows they
are ready to play



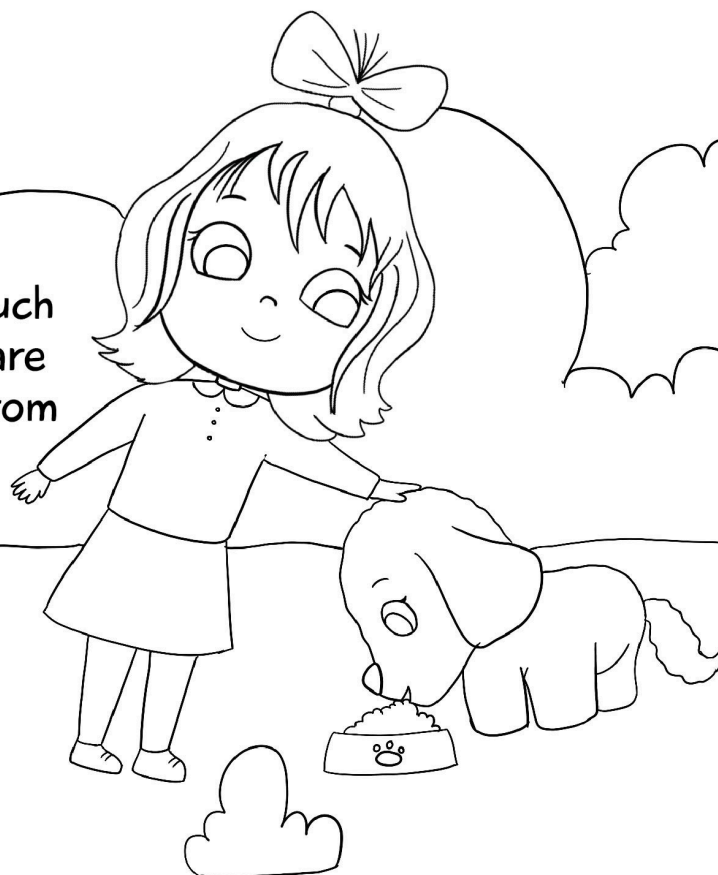
**Don't pull on a dog's
tail, ears or paws.**



**Instead, pet them with a flat
open palm along their back in
long, gentle strokes**



Don't approach or touch
your dog while they are
eating, or pull food from
their mouth



Instead, give them
space and wait for
them to finish eating

